



# L.T. Rich Products, Inc.

## NEW STRIKER Trail Tech Speedometer

**Date:** May 10th, 2011

**Bulletin #:** 010

**Subject:** NEW *STRIKER* Trail Tech Speedometer (GPS Replacement)

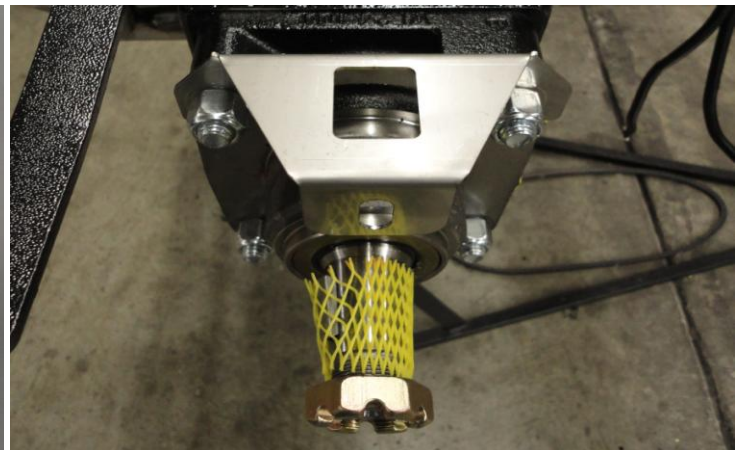
**Model(s):** 2006 to current Z-Spray units (part# 80907-STRIKER )

L T Rich Products has designed an instruction sheet to install the NEW *STRIKER* Trail Tech Speedometer. If at any time you have questions about this update and the installation instructions, feel free to call us at **765-482-2040** or **877-482-2040** and ask for Mike Floyd.

Remove cables from Cable Mount Bracket and replace with new bracket. Re-install all cables and tightened hardware. Install new Speedometer to Cable Mount Bracket with 2 screws provided (picture # 1 with 4 cables running thru the square opening of the bracket). Once the bracket is mounted, position yourself to the right/rear wheel and remove tire. Remove top 2 nylon nuts holding the wheel motor to the wheel motor spacer (picture #2) and install Speedometer cable bracket on studs and tighten down holding bracket in place.



(picture #1)



(picture #2)

[www.zspray.com](http://www.zspray.com)

920 Hendricks Drive Lebanon, IN 46052

(765) 482-2040 or (877) 482-2040

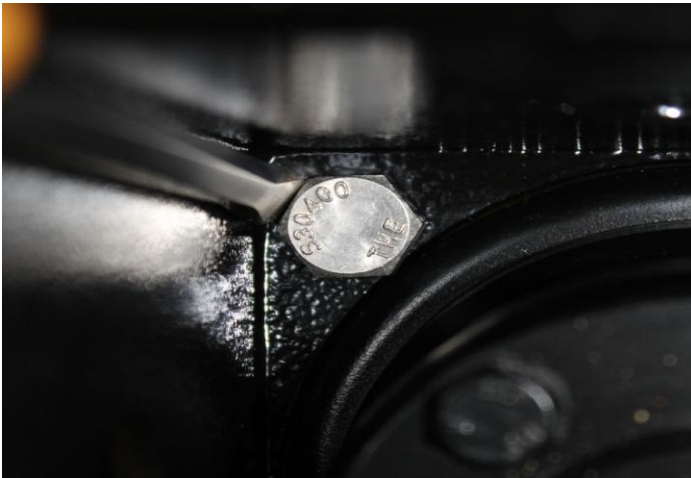
Fax (765) 482-2050





# **L.T. Rich Products, Inc.**

Removing and installing the wheel motor nuts and bolts will require a large screwdriver or a large 3/4" wrench. Place either tool in the wheel motor spacer housing (picture #3 & #4) against the hex head and loosen nut.



(picture #3)

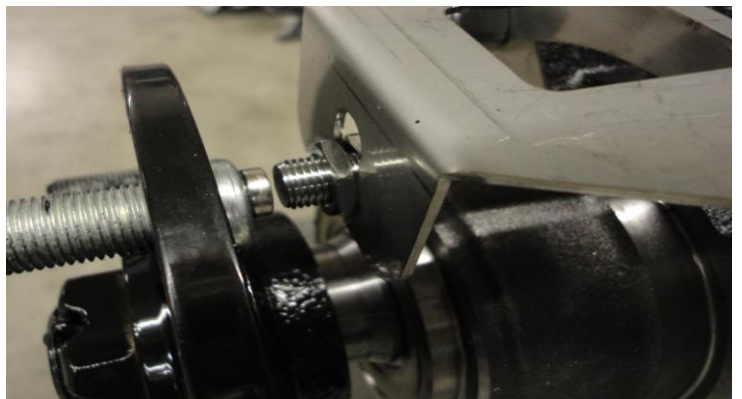


(picture #4)

Glue the provided round magnet to 1 of the 4 wheel hub studs (picture #5) and then line up Speedometer bolt in bracket hole. Tighten nut and ensure that magnet lines up with bolt head (picture #6). Run Speedometer bolt wire along hydraulic line (support with zip ties) and up to the control box and connect to "Power Cable" (diagram located on page 9 of User's Manual).



(picture #5)



(picture #6)

Take provided red and black wire and attach connector end to the "Speed Sensor" wire (indicated on page 9 of User's Manual). Take the wire end and ground the black wire looped end to the engine ground (picture #7) and the red

**[www.zspray.com](http://www.zspray.com)**

**920 Hendricks Drive Lebanon, IN 46052**

**(765) 482-2040 or (877) 482-2040**

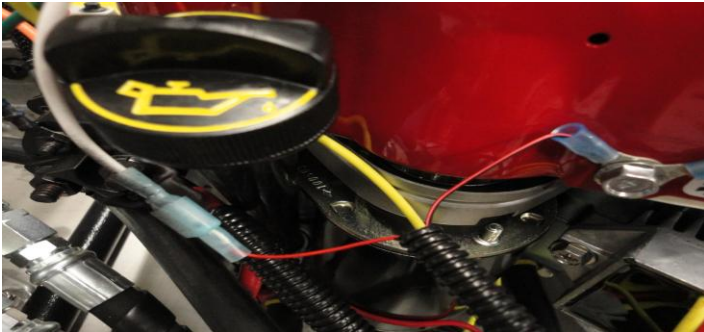
**Fax (765) 482-2050**





# L.T. Rich Products, Inc.

end to the auxiliary connector (white wire with connector end on left of picture # 5). Turn system on to verify all connectors are attached properly.



(picture #7)



For calibrating Speedometer, refer to page 16 if not using an L.T. Rich tire (tire manufactures are allow 8% over and/or up to 8% under stated tire size marked on the side walls. Current Z-Max, Intermediate and Junior Z-Spray units with 20 X 10.5 – 8 are calibrated at 1580 and current Junior 36 or Junior with 20 X 8 – 8 tires are calibrated at 1635 on page 17's calibration chart). If not using OEM tires, refer to page 16 & 17 of User's Manual to calibrate.

All new Z-Spray units manufactured from May 2011 to current will have this Speedometer setup and calibrated on each unit. Functions that are setup on the Z-Spray units when leaving the shop are.....

- 1) **Speed** (to assist in granular and liquid applications. System can be setup by following instructions on page 21 of User's Manual)
- 2) **Voltage** (to assist operator/owner if charging system is starting to fail. Right red indicator is set to come on if voltage dips below 12.0V. This can be setup by following instructions on page 24 in User's Manual )
- 3) **Time** (can be setup by following instructions on page 26 of User's Manual)
- 4) **Air Temperature** (to assist operator with temperature gauge to stay within spray temperature guidelines. System can be setup by following instructions on page 25 of User's Manual)
- 5) **Maintenance** (Oil Icon is setup for 200 miles/50 hour oil changes and Wrench Icon is setup for 2,000 miles/500 hour hydraulic oil change. This can be setup by following the instructions on page 27 & 28 of User's Manual)

Trail Tech Speedometer can be setup to do many functions, so refer to the User's Manual for any additional functions you wish to calibrate and setup.

**\*\*PLEASE NOTE DURING ORDERING OF KIT WHAT Z-SPRAY THIS IS BEING UPDATED TO\*\***

**\* If you have questions about this update kit bulletin, please call us at L T Rich Products, Inc \***

**[www.zspray.com](http://www.zspray.com)**

**920 Hendricks Drive Lebanon, IN 46052**

**(765) 482-2040 or (877) 482-2040**

**Fax (765) 482-2050**

