

Spreader Hopper 120 lb

Kit No. 142-2031

Installation Instructions

Safety

Safety Alert Symbol

This Safety Alert Symbol (Figure 1) is used both in this instruction sheet and on the machine to identify important safety messages which must be followed to avoid accidents

This symbol means: **ATTENTION! BECOME ALERT! YOUR SAFETY IS INVOLVED!**



Figure 1
Safety Alert Symbol

g000502

The safety alert symbol appears above information which alerts you to unsafe actions or situations and will be followed by the word **DANGER**, **WARNING**, or **CAUTION**.

DANGER: Indicates an imminently hazardous situation which, if not avoided, **Will** result in death or serious injury.

WARNING: Indicates a potentially hazardous situation which, if not avoided, **Could** result in death or serious injury.

CAUTION: Indicates a potentially hazardous situation which, if not avoided, **May** result in minor or moderate injury.

This manual uses two other words to highlight information. **Important** calls attention to special mechanical information and **Note** emphasizes general information worthy of special attention.

Note: Determine the left and right sides of the machine from the normal operating position.

Note: Park the machine on a level surface. Make sure all moving parts have stopped, parking brake is engaged, the key has been removed, and the spark plug wire has been disconnected. Allow the machine to cool before starting these instructions.

Installation Instructions

1. Stop engine, wait for all moving parts to stop, engage the parking brake remove the key, and disconnect the negative battery cable.
2. Remove and retain the thigh pad and pump guard shield.
3. Looking at the underside of the solenoid valve, locate the hose attached to the "T" fitting.

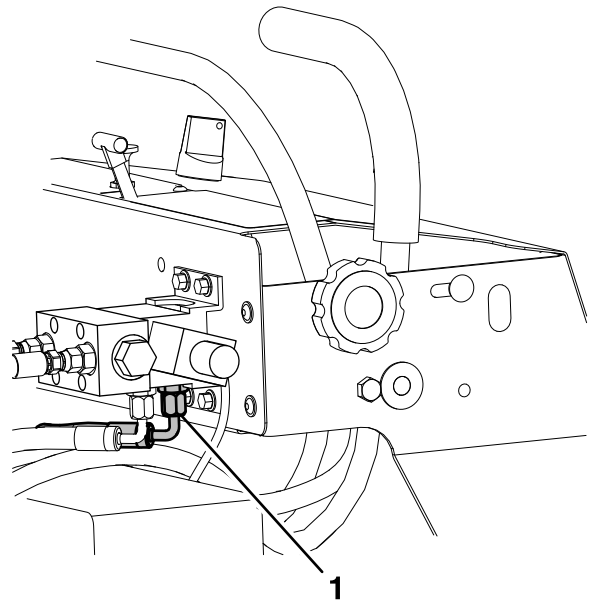


Figure 2

g318711

1. Rear fitting "T"

Follow the hose to the LH auxiliary pump fitting and disconnect it from the pump only.



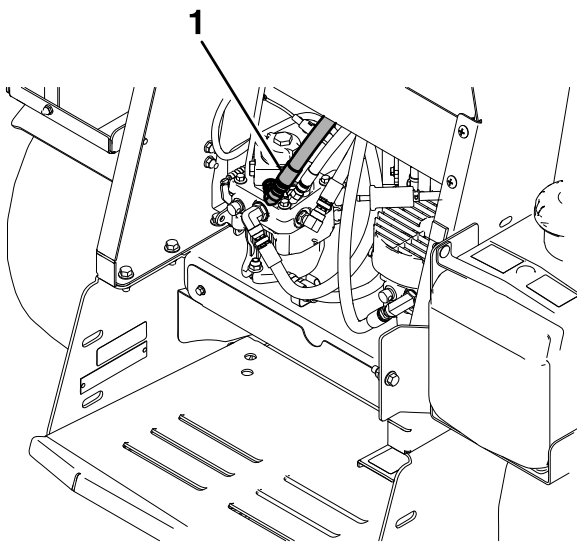


Figure 3

g318709

4. Place the hopper assembly onto the front of the traction unit as shown in [Figure 4](#). Secure the hopper using four (two on each side) 3/8-16 x 1 inch hex flanged screws and 3/8 inch hex flanged nuts.

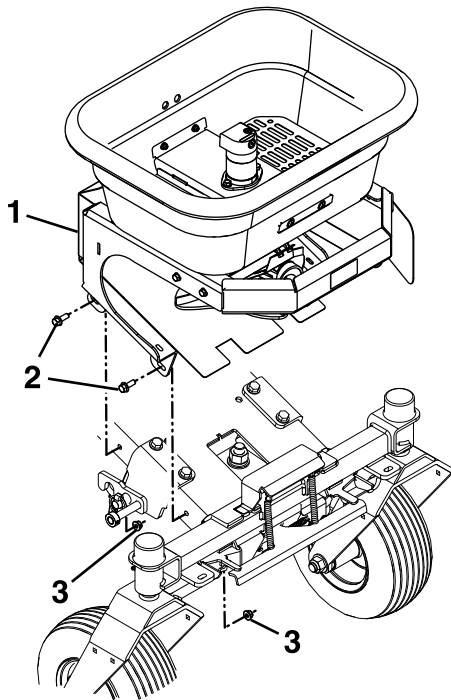


Figure 4

g318336

- | | |
|--------------------------------------|-----------------------------|
| 1. Hopper assembly | 3. 3/8 inch hex flanged nut |
| 2. 3/8-16 x 1 inch hex flanged screw | |

5. Install the speedometer mount bracket using two 1/4-20 x 5/8 inch hex screws and two 1/4 inch nyloc nuts as shown in [Figure 5](#).

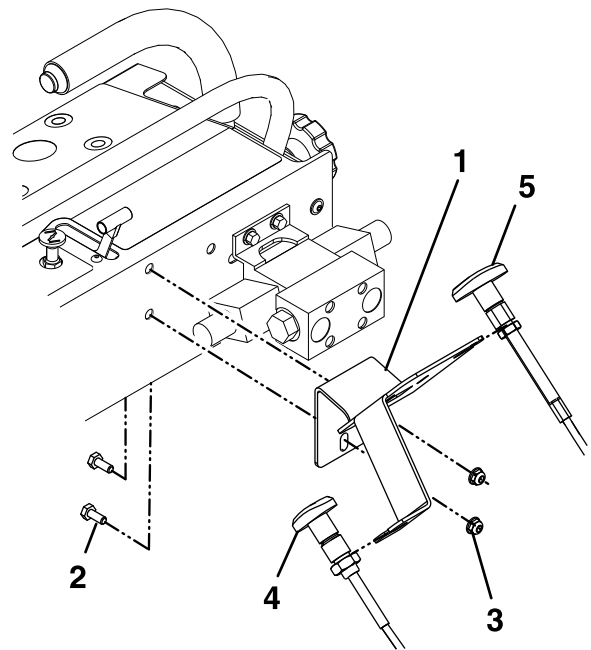


Figure 5

g318366

1. Speedometer bracket
2. 1/4-20 x 5/8 inch hex screws
3. 1/4 inch nyloc nuts
4. Spreader deflector lock control
5. Spreader On/Off control

6. Connect the spreader On/Off and the deflector lock controls to the speedometer mount bracket.
 - Route the Spreader deflector lock cable under the lift arm assembly.
 - Route the Spreader On/Off cable over the lift arm assembly.

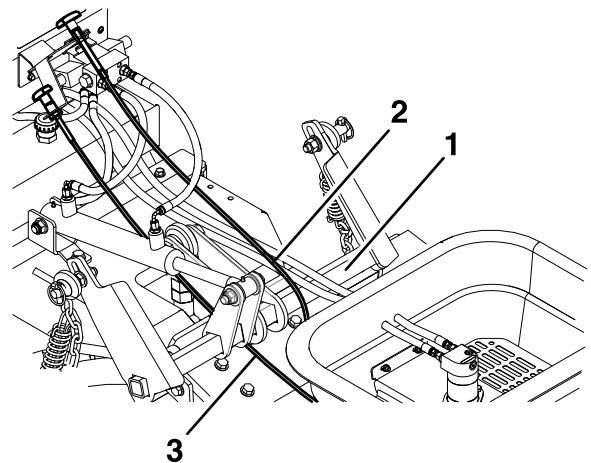


Figure 6

g318688

- | | |
|--------------------------|----------------------------------|
| 1. Lift arm assembly | 3. Spreader deflector lock cable |
| 2. Spreader On/Off cable | |

7. Remove and retain the set screw or nut from the flow control manifold knob. Insert the flow

control manifold through the underside hole of the control panel. Secure using four 1/4-20 x 3 1/2 inch screws and four 1/4 inch nyloc flanged hex nuts as shown in [Figure 7](#). Reinstall the knob.

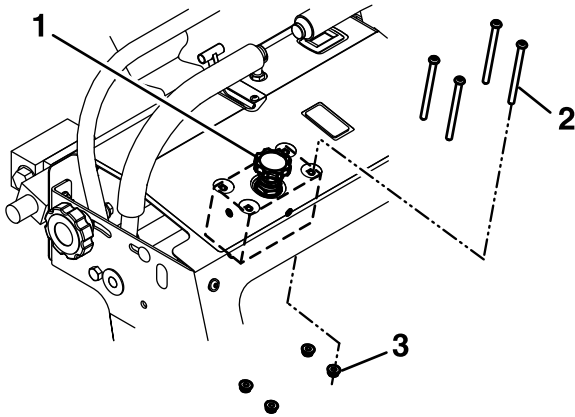


Figure 7

g318410

1. Flow control manifold
2. 1/4-20 x 3 1/2 inch screws
3. 1/4 inch nyloc flanged hex nuts

8. The underside of the manifold has four ports. Use the figure and steps below to connect the hoses.

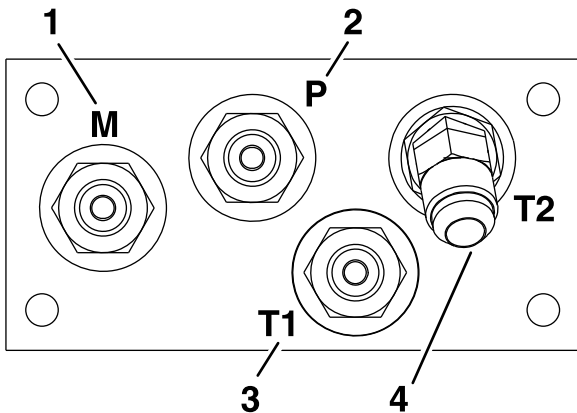


Figure 8

g318479

1. "M"—Left port of spinner motor
2. "P"—Rear fitting of solenoid valve ("T" shown in [Figure 11](#))
3. "T1"—Right port of spinner motor
4. "T2"—Left fitting on auxiliary pump

9. Attach two 1/4 x 60 inch hoses to the spinner motor as shown in [Figure 9](#):

- One hose end connects to the left port of the spinner motor and the other end to the left fitting of the manifold port marked "M".

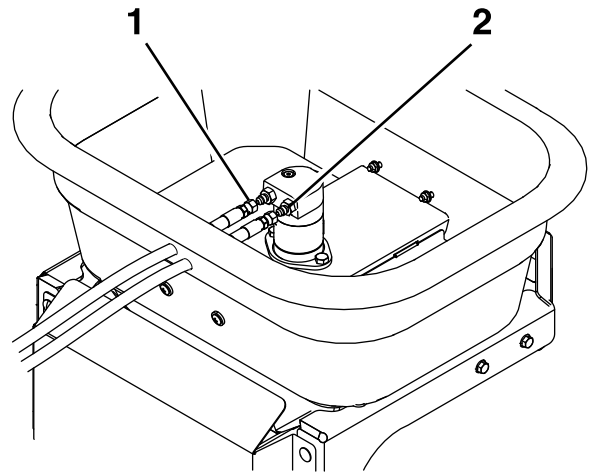


Figure 9

g318468

1. Spinner motor—left port
2. Spinner motor—right port

- Attach one hose end to the right port of the spinner motor and the other end to the right fitting of the manifold port marked "T1".

10. Install the hopper cover.

11. Connect the straight end of the 1/4 x 18 inch hose to the manifold port marked "P" ([Figure 8](#)) and the 90 degree elbow to the rear fitting marked "T" (closest to the tower) on the solenoid valve (see [Figure 10](#) and [Figure 11](#)).

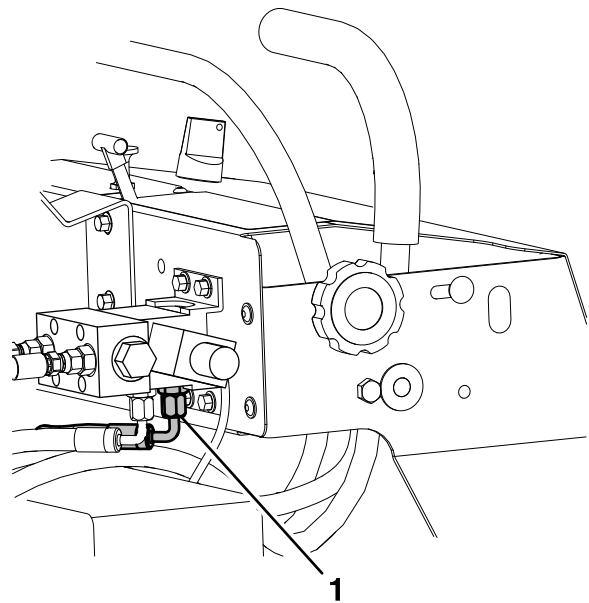
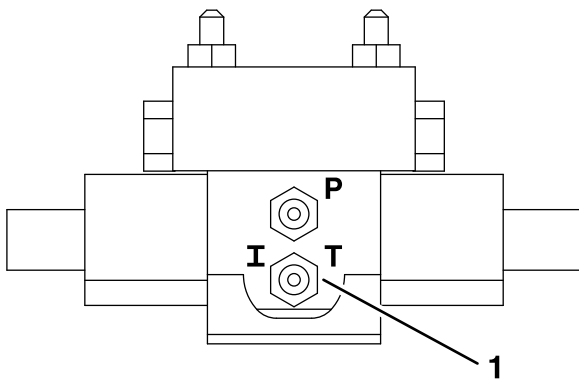


Figure 10

g318494

1. Rear solenoid fitting "T"



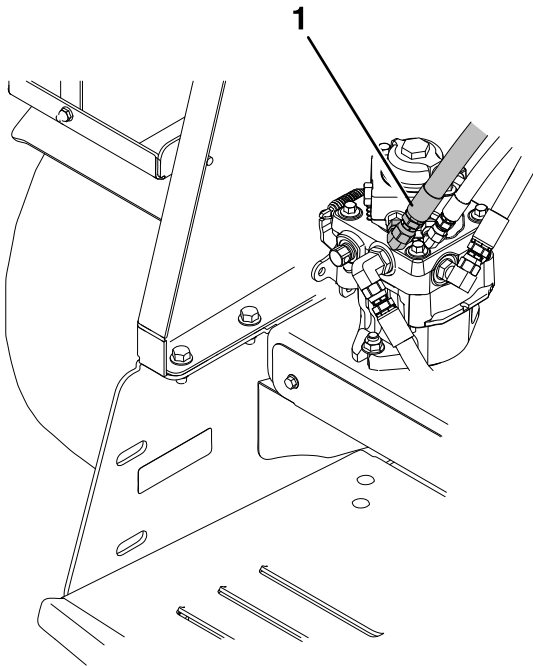
g318710

Figure 11

Underside of Solenoid

1. Rear solenoid fitting "T"

-
12. Attach one end of the 3/8 x 21.27 inch hose to the left (or rear) fitting on the auxiliary pump as shown in [Figure 12](#).



g318525

Figure 12

1. Left auxiliary fitting

Attach the other end of the hose to the manifold port "T2".

13. Reinstall the pump guard shield and thigh pad.
14. Reconnect the negative battery cable.

This page left intentionally blank

Parts List

Item No.	Part No.	Description	Qty
1	01-201-0780	Hyd Fitting	2
2	104-7201	Nut-Nyloc 1/4-20 Flg	2
3	126-0520	Screw-HH 3/8-16 x 7/8 SS	2
4	126-0985	Mount-Dial	1
5	126-0986	Clip	1
6	126-0988	Dial	1
7	126-0990	Guide-Rate, Gate	4
8	126-0991	Diffuser	1
9	135-5243	Motor-Hydraulic, Spreader	1
10	135-5569	Retainer, Cable	1
11	135-5573	Slide-Door, Hopper	1
12	135-5682	Ball Joint-SS [10-32]	1
13	135-5931	Cable-Push/Pull	1
14	135-5935	Cable-Push/Pull	1
15	135-5937	Coupler	1
16	135-5943	Bearing-Flange	1
17	135-8488	Spinner W/Cotter Pin	1
18	135-5957	Wire-Agitator	1
19	135-5961	Retainer-Cable, Wire	1
20	135-5965	Linkage-Gate, Rate	1
23	135-6280	Screw-HHF 1/4-20 x 1/2 Serrated SS	8
25	135-6341	Washer [1/4 X 3/4 X 1/8, Nyl]	8
26	135-6342	Nut-Hex Flg #10-24 Nyloc SS	3
27	135-6352	Screw-PTH 1/4-20 x 1 SS	8

Item No.	Part No.	Description	Qty
28	135-6356	Screw-HH #10-24 x 3/4 SS	3
29	135-6974	Asm-Hopper	1
29:2	135-6725	Decal-Dismemberment Hazard	1
30	142-3083	Cover-Hopper	1
31	135-8504	Shaft-Hopper, 120	1
32	135-8519	Hopper-120lb	2
33	142-0053	Asm-Hose Hyd	2
34	142-0328	Mount-Speedometer	1
35	142-1987	Pan-Hopper	1
36	142-1990	Base-Hopper	1
37	142-1995	Screen-Hopper	2
38	321-3	Screw-HH 1/4-20 x 5/8	2
39	3241-7	Screw-SQH 1/4-20 x 1/2	2
40	HDW05856	Nut-Hex Nyl Ins #10-32 UNF	1
41	142-4324	Manifold-Flow Control, Hopper	1
41:2	353-212	Fitting-Elbow	1
42	135-6385	Screw-Button Head 1/4-20 x 3 1/2 SS	4
43	135-6108	Nut-Hex Flg 1/4-20 Nyloc SS	12
44	520-0019	Nut-Hex Jam #10-32 UNF	1
45	135-6208	Screw-HHF 3/8-16 x 1 Serrated SS	4
46	135-6110	Nut-Hex Flg 3/8-16 SS w/patch SS	6
47	142-3120	Hose Asm-Hyd Hp [3/8 X 21.27]	1
48	135-7016	Asm-Hose [1/4 X18]	1
49	135-5680	Fitting-Swivel, 90 Deg	1

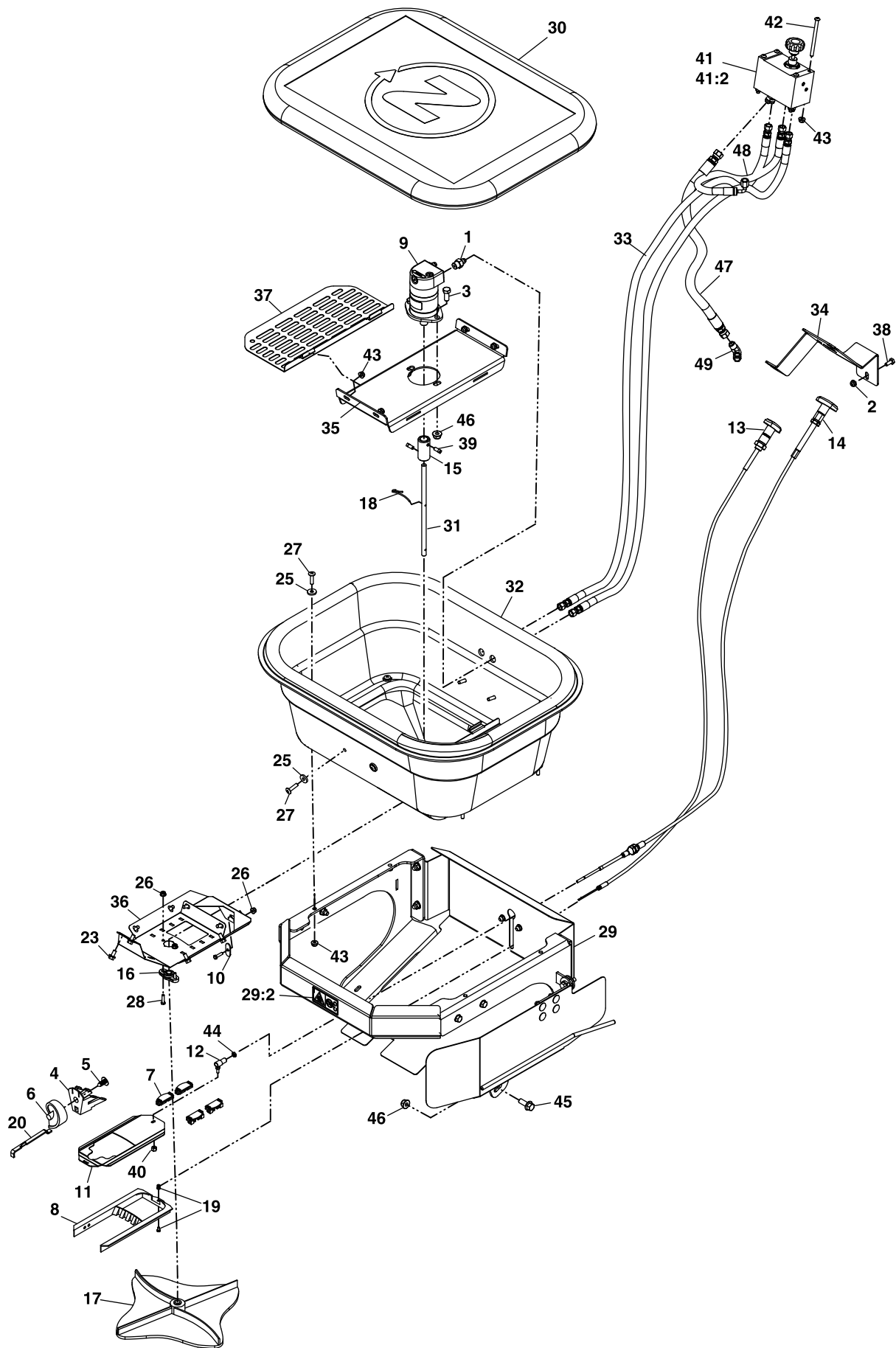


Figure 13

g317491